

I ADJUSTMENT/SETTING

5. SERVICE MODE

5.3 Machine Adjustment

5.3.16 Moire Adjustment (Printer Adjustment)

(1) Functions

Prevent moire by lowering the laser powers of LD1 and LD8 to absorb the changes of the beam pitch interval in the sub scan direction.

(2) Usage

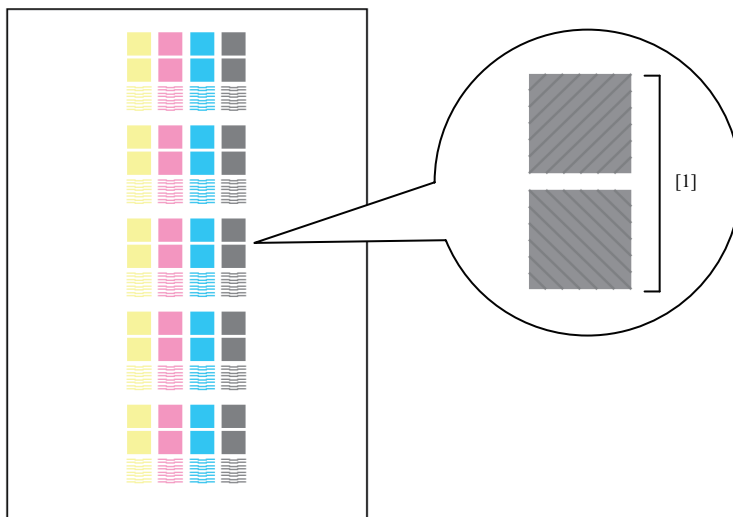
Perform this adjustment after replacing the write unit.

Note

- Be sure to complete [I.5.3.9 Skew Initial Position Memory \(Printer Adjustment - Writing Initial Position Memory\)](#), [I.5.3.11 Color Registration Auto.Adj. \(Printer Adjustment\)](#), and [I.5.3.15 Beam Pitch Adjustment \(Printer Adjustment\)](#) before this adjustment.

(3) Procedure

1. "Service Mode menu screen"
Press [01 Machine Adjustment].
2. "Machine Adjustment Menu screen"
Press [01 Printer Adjustment].
3. "Printer Adjustment Menu screen"
Press [15 Moire Adjustment].
4. "Moire Adjustment screen"
Press [Print Mode].
5. "PRINT MODE screen"
Select A3 or 11 x 17 paper (105g/m² or less) and press the Start key.
6. Check the moire.
Check the moire of each color on the 3rd column of the chart.



7. If there are any moires, press [Exit PrintMode].
8. "Moire Adjustment screen"
Enter a value through the numeric buttons and press [Set].
 - Setting range: 0 to 5
9. Repeat the steps 4 to 8 until an appropriate value is obtained.